

# KARIBAN

**REFERENCE :** K455

**SIZES :** 6/8\_8/10\_10/12\_12/14

**COMPOSITION :**

Main fabric : Brushed Combed Cotton / Polyester fleece 80/20 -  
300 80%cotton / 20%polyester

Lining 1 : Cotton Tharmal 215 For hood lining 100%cotton

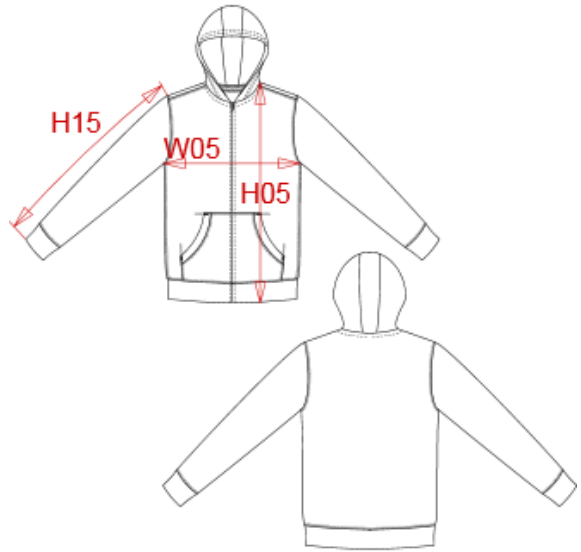
**WEIGHT :**

Main fabric : 300 gsm

Lining 1 : 210-220 gsm

**ARTICLE WEIGHT :**

345 gr/pc



DESCRIPTION	
<b>Français :</b> Sweat-shirt capuche zippé enfant	
<b>English :</b> Kids' full zip hooded sweatshirt	
<b>Nederlands :</b>	
<b>Deutsch :</b> KAPUZEN JACKE FÜR KINDER	
<b>Español :</b> SUDADERA CON CAPUCHA Y CREMALLERA PARA NIÑO	
<b>Italiano :</b> FELPA BAMBINO FULL ZIP CON CAPPuccio	
<b>Português :</b> Casaco sweatshirt de criança com capuz	

COLORS	PANTONE SERIGRAPHIE
White	White
Black	Black
Navy	296C
Red	200C
Light royal blue	7685C
Oxford grey	-

MEASUREMENT						
Description	6/8	8/10	10/12	12/14		
<b>H05</b> Hauteur totale avec BC / Total height with rib	49,50	54,50	59,50	64,50		
<b>W05</b> 1/2 largeur poitrine / 1/2 chest width	39	42	45	48		
<b>H15</b> Longueur manche avec BC / Sleeve length with rib	45,50	49,50	53,50	57,50		

CARE LABEL				

PACKING	
Box	20 pcs / box 6/8 => L:58.1cm W:37.8cm H:32cm GW:8.10kg NW:7.05kg 8/10 => L:58.1cm W:37.8cm H:32cm GW:9.00kg NW:7.85kg 10/12 => L:58.1cm W:37.8cm H:42cm GW:9.60kg NW:8.45kg 12/14 => L:58.1cm W:37.8cm H:42cm GW:10.55kg NW:9.40kg