

# KARIBAN

**REFERENCE :** K443

**SIZES :** XS\_S\_M\_L\_XL\_XXL\_3XL\_4XL

**COMPOSITION :**

Main fabric : Brushed Cotton / Polyester fleece 80/20 - 360  
 80%cotton / 20%polyester  
 Fabric 2 : Single jersey Cotton/Viscose - 180 For inner hood  
 and neckline property tape 90%cotton / 10%viscose  
 Fabric 1 : Cotton Single jersey 180 For inner hood and neckline  
 property tape 100%cotton

**WEIGHT :**

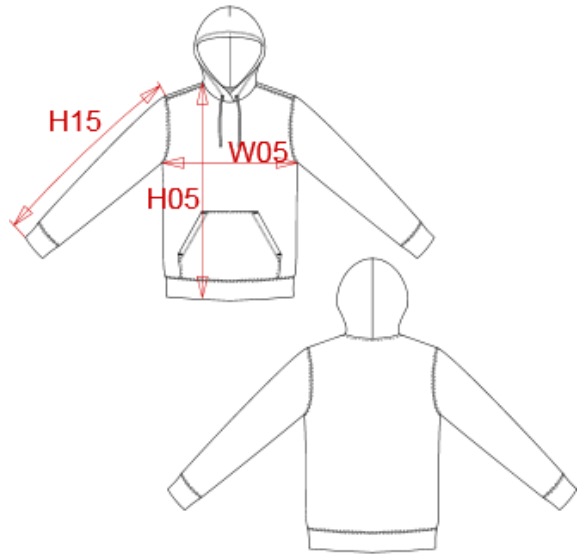
Main fabric : 360 gsm  
 Fabric 2 : 180 gsm  
 Fabric 1 : 180 gsm

**FABRIC CONSTRUCTION AND FINISHING :**

Low shrinkage / Silicon finish

**ARTICLE WEIGHT :**

690 gr/pc



DESCRIPTION	
<b>Français :</b>	Sweat-shirt capuche
<b>English :</b>	Hooded sweatshirt
<b>Nederlands :</b>	Sweater met capuchon
<b>Deutsch :</b>	Sweatshirt mit kapuze
<b>Español :</b>	Sudadera con capucha
<b>Italiano :</b>	Felpa con cappuccio
<b>Português :</b>	Sweatshirt com capuz

COLORS	PANTONE SERIGRAPHIE
White	White
Black	Black
Navy	296C
Red	200C
Dark grey	432C
Light royal blue	7685C
Oxford grey	-
Dark khaki	418C

MEASUREMENT									
Description	XS	S	M	L	XL	2XL	3XL	4XL	
<b>H05</b> Hauteur totale avec BC / Total height with rib	67,50	69,50	71,50	73,50	75,50	77,50	80,25	83	
<b>W05</b> 1/2 largeur poitrine / 1/2 chest width	51	54	57	60	63	66	70	74	
<b>H15</b> Longueur manche avec BC / Sleeve length with rib	63	65	67	69	71	73	75	77	

CARE LABEL				

PACKING	
Box	20 pcs / box XS => L:58.1cm W:37.8cm H:42cm GW:12.90kg NW:11.10kg S => L:58.1cm W:37.8cm H:42cm GW:13.95kg NW:12.15kg M => L:58.1cm W:37.8cm H:54cm GW:14.80kg NW:13.00kg L => L:58.1cm W:37.8cm H:54cm GW:15.05kg NW:13.25kg XL => L:58.1cm W:37.8cm H:54cm GW:16.05kg NW:14.25kg XXL => L:58.1cm W:37.8cm H:54cm GW:17.20kg NW:15.40kg 3XL => L:58.1cm W:37.8cm H:54cm GW:18.40kg NW:16.60kg 4XL => L:58.1cm W:37.8cm H:54cm GW:19.20kg NW:17.40kg